

## Ottomenu 2.0 - a Menu System for Windows

**Ottomenu** is a Toolbook application that lets you create a menu system for Windows. It supports 8 pages of up to 10 menu items for a total of 80 items. An iconic interface is provided via page and program icons that the user can configure. Program entries can launch Windows and DOS applications from any directory supported by Windows. An index page gives direct access to the 8 menu pages, has a quick shell to DOS button, a total free memory display, and an exit button.

To get you started, two sample menu pages are included that mimic the "Main" and "Accessories" group of the Windows Program Manager. There are also some sample entries on the other pages to give you some examples. After you look over the entries, feel free to change any or all of the items. Both the icons and the menu entries are configurable!

Ottomenu runs under both the runtime and full Toolbook interpreters with all features available.

### Copyright

Ottomenu is a copyrighted work of Doug Overmyer. You are granted a license to use the work for 30 days. If you continue to use it, please register your copy by sending \$10 to



I'll send you a registration code to suppress the startup notice and speed up loading your menu.

Feel free to pass the original Ottomenu package and documentation on to others to try.

### Using Ottomenu:

To use Ottomenu, click one of the page icons on the Index page. It will jump you to one of 8 menu pages. Then click on the icon of the application you want to run. If you change your mind, you can return to the Index page by clicking on the "rolodex" icon in the lower center of each page.

The index page has a shell to DOS button labeled "C:>" - click it to bring up command.com. There is also a "mem" button which will get the total free memory from the Windows system. The "Exit" button will end your Windows session.

## 2

The "Utilities" menu on the menu bar has several menu items that will help you use and configure Ottomenu. You can change the caption of the window, add and delete icons, change menu items, and bring up a help page with an abbreviated version of these instructions.

### **Installation**

Copy the ottomenu.tbk file to your toolbox directory. Then run Ottomenu from the program manager, file manager, or using the "Run..." command on either. You will need to enter "toolbox.exe ottomenu.tbk" or just "ottomenu.tbk" if you have an active .tbk association. When you have configured your menu to your taste, you may wish to load it directly when Windows starts by including it on the **run =** line of your WIN.INI file. Remember to save your changes.

Please note that the Toolbox executable files must be in the DOS path when Windows starts, or you'll suffer mysterious problems with Ottomenu and any other Toolbox application.

### **Adding Icons & Menu Items:**

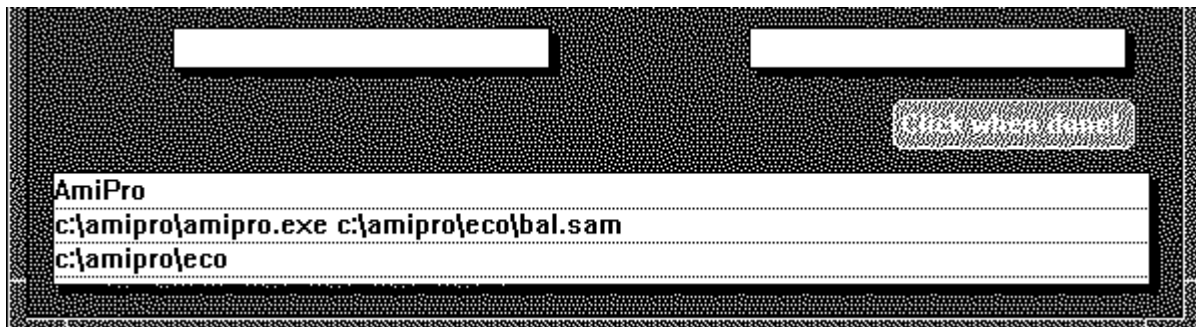
Icons and menu items are added by you to let you launch an application. Basically you'll need to supply a description of the program (which appears on the menu), the program file name and any startup parameters, and optionally a startup directory. The icon will be obtained from the application itself by running it and copying the icon to the clipboard! Here's the details

1. Use the "Run..." command from the "Utilities" menu to startup the application you wish to add.
2. Minimize the application and select the icon - do this by clicking once on the icon, waiting a couple seconds, and clicking again. The text below the icon should be highlighted.
3. Use the Alt-PrtScr key combination to copy a bitmap of the icon to the Windows clipboard. You might want to run the clipboard to check on the results.
4. For DOS apps, you may wish to use the generic disk icon in the icon library at the back of the book. You can copy it to the clipboard by clicking the icon.
5. Go to the page you wish to add the item to. Check that there is a free spot for the menu item, or choose "Delete Icon..." from the "Utilities" menu to remove one first.
6. Choose "Paste Icon..." from the Utilities menu, and the icon will be pasted into the first available slot.
7. Menu items are numbered (top to bottom) 1 to 5 left column, 6 to 10 right column.

3

8. Choose "Change Menu Item..." from the Utilities menu. A wide text box will open at the bottom of the page with three blank lines.
  - a. Click on the first line, and enter the Name or description you want to appear on the menu page, and hit return.
  - b. Type the application's executable name (full path if needed) on line two, followed by any startup parameters (still on line 2). Hit return.
  - c. On line three, type the startup directory (full path) if desired or needed. This entry is optional.
9. Click the red "Done" button to transfer your entry to the menu page and close the text box.

**Example:** here's a sample entry for AmiPro. AmiPro is stored in the C:\amipro subdirectory, it's not in the DOS path, so I give the full path name on line 2. I also wish to start it with the file bal.sam which is located in the c:\amipro\eco subdirectory, so I place the fully qualified filename after the program name. Finally, I want to change to the c:\amipro\eco directory before starting Ami, so on line 3 I enter the starting subdirectory. This is how it looks:



#### Deleting Icons and Menu Items

Go to the page where you wish to delete the items. Choose "Delete icon..." from the "Utilities" menu, and give the icon number. Choose "Modify menu item..." to delete a menu entry - just highlight the lines in the text box and choose "Clear" or hit the Del button. By the way, you must have an icon to click on in order to use a menu entry.

#### Configuring the Index Page:

The index page has places for 8 page icons which you can use to go directly to the page of your choice. Next to each page icon is a text field to enter a brief description of the page. You can enter up to two lines of text. Brevity is needed here. You can change the icons as follows:

4

1. Navigate to the Index page and check that there is a free slot for the new icon. If not, choose "Delete Icon..." from the Utilities menu and remove one.
2. Go to the last page in Ottomenu using the -->| button on the far right of the page. The last two pages contain a collection of page icons.
3. Click on the icon of your choice - it will be copied to the clipboard.
4. Go to the Index page, choose "Paste icon" to paste in your choice from the clipboard.
5. Click in the text field next to the icon and change the text if needed.

If you prefer to "roll your own", copy the blank icon to the clipboard, paste it into Windows Paintbrush, add your own design, copy it back to the clipboard, and paste it in. I suggest that you first set the Paintbrush page size to "54 by 56" pixels (very small) using the "Options/Image Attributes" menu, and then "File/New" to actually change the page size before pasting the blank icon into Paintbrush.

#### **The "Utilities menu"**

The "Change Caption..." option lets you alter the window name in the title bar.

"Configure DOS Button..." lets you change the program that is run when you click the "C:>" button. You can enter command.com (the default), a PIF file, 4DOS, or whatever.

"Register..." lets you enter your registration number and speed up the program startup.

"Clear all menus..." removes all menu items from all pages as well as the icons.

"AutoIconize..." lets you choose to iconize Ottomenu whenever a menu item is selected.

#### **Notes:**

While Ottomenu lets you specify a startup directory that is different from the program directory, Windows and/or your application may not be happy about it. This is likely to happen if your program file is not in the DOS path when Windows is started, and it uses dynamic link libraries or special fonts. (Paintbrush is an example of a Windows program that uses a .dll link library) If your application complains when it starts up that it can't find one or more files, change the menu entry for that item so that line 3 points to the directory where the program file is located.

Example: Paintbrush is in the c:\graphics directory which is not in the DOS path. Your entries might be:

```
PaintBrush
c:\graphics\pbrush.exe
c:\graphics
```

\*Toolbook has problems with paths/programs that contain the & character. Currently you can not launch programs which contain this character.

5

This is fairly obscure, but I haven't found a fix yet.

**Saving your Work and Making Backups**

Whenever you make changes to your menu, you will need to save them using the "File/Save" or "File/Save As..." menu options. This includes adding as well as deleting menu items, icons, and other configuration info. You will find that even when you delete items, your menu file may grow in size. The way to recover and compact the file is to use the "Save As..." command to save it to a different name --Toolbook will compact it when it saves it to a different name. You can then save it again to the original name, thus preserving the rest of your Windows setup.

This procedure will also give you a backup in case your menu becomes corrupted. This is an infrequent, but not impossible event so it is best to always have a backup file. Toolbook applications such as Ottomenu are by their nature self-modifying so it is best to be careful.

By the way, feel free to rename your menu file to whatever you like so long as the extension is **.tbk** . Ottomenu does not depend upon its filename to find itself.

**Autoiconize Option**

The "Iconize Ottomenu..." option on the "Utilities" menu lets you set the default action when you launch a program. If you choose yes, Ottomenu will automatically iconize itself whenever another application is started. The default is "yes".

**Disclaimer**

You use Ottomenu entirely at your own risk. I accept no responsibility for its operation or performance or any loss you might suffer from it.

I do hope that you find it useful and attractive.